

Port of Tacoma

I-5 and 54th Avenue E Improvement Project

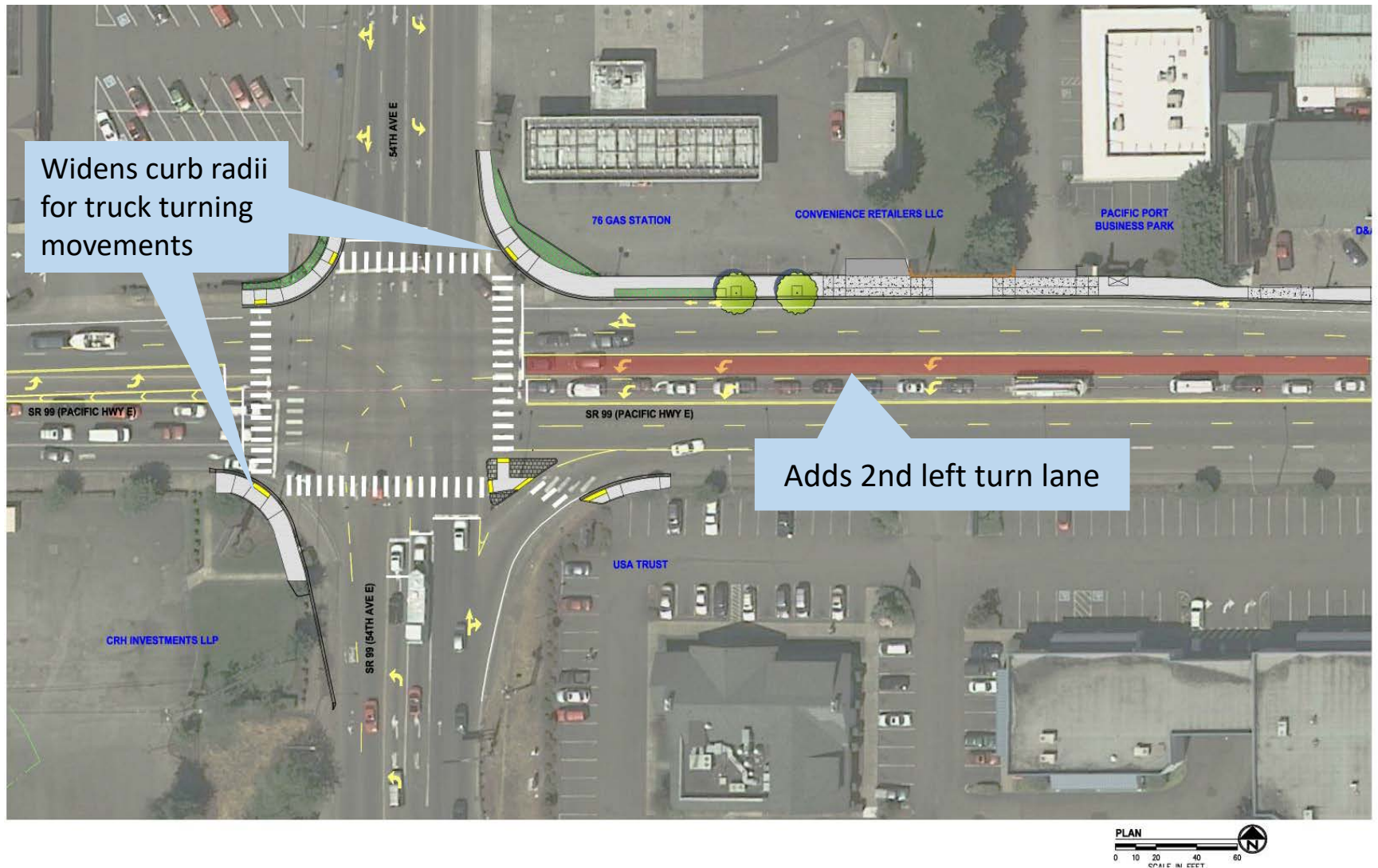
City of Fife

*Fabulich Center
February 2018*

Vicinity Map



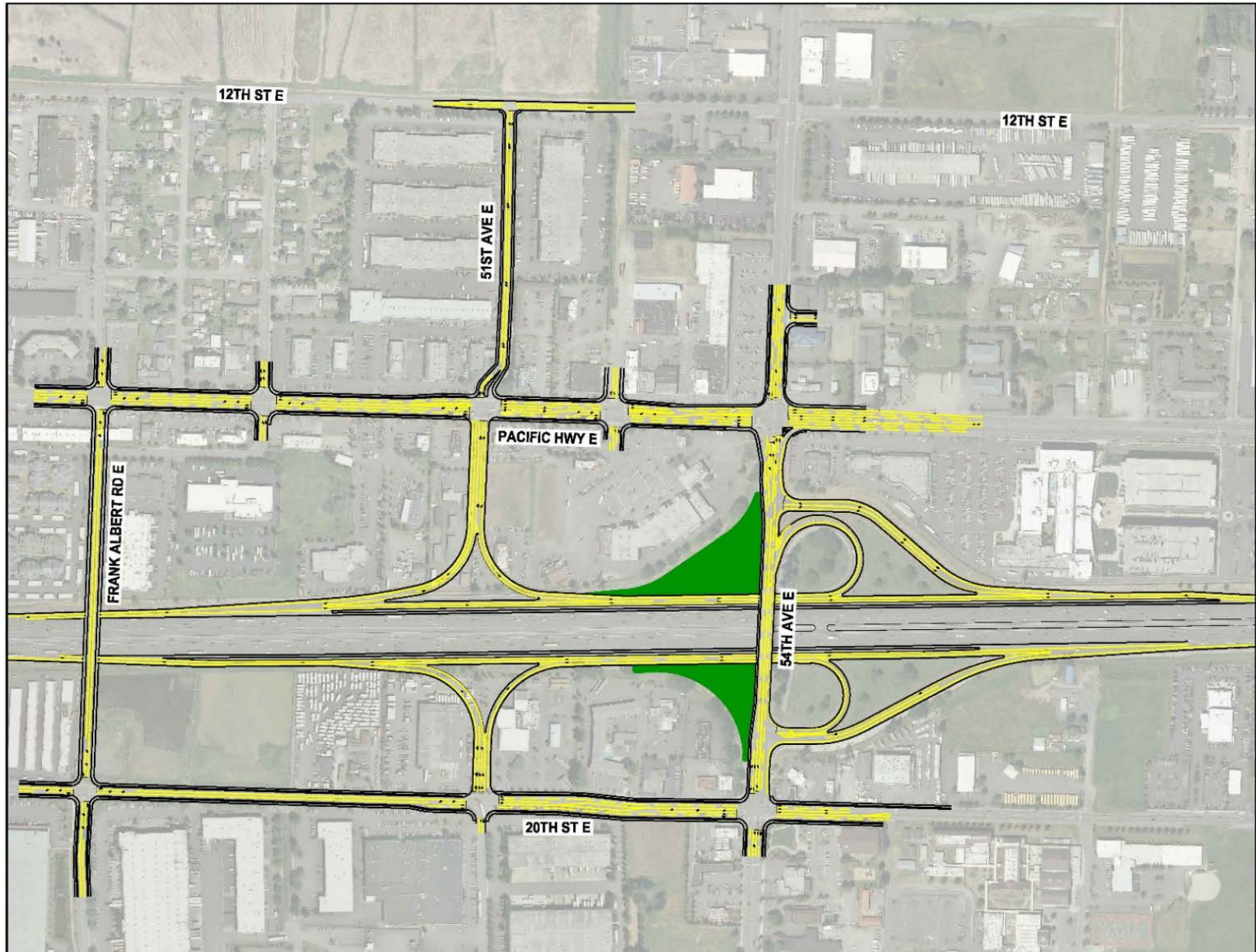
Phase 1 Improvements



City of Fife

I-5/54th Avenue E Interchange Improvement Project

Interchange Improvement Project



Existing Project Need

- Interchange is integral to the freight operations for the Port of Tacoma, City of Fife and the State.
 - 54th Ave E, Pacific Hwy E (SR 99) and I-5 are T-1 Freight Corridors.
- Interchange is overcapacity and experiences significant delays, queuing and congestion-related collisions (211 collisions in 3 years).
- Only I-5 crossing and I-5 access within one mile.
 - Concentrates all vehicles onto 54th Ave E.
 - Divides Fife into north and south halves.



City of Fife

I-5/54th Avenue E Interchange Improvement Project

Phase 1 - 54th Ave E/Pacific Hwy E (SR 99) Intersection

- Intersection experiences significant congestion, acts as a traffic bottleneck, and causes traffic to queue back onto I-5 southbound off-ramp and mainline.
- 45,000 vehicles/day travel through the intersection.
- The westbound left turn is the most congested movement with a demand of over 400 vehicles during the afternoon peak hour.

54th Ave E/Pacific Hwy E (SR 99)



Westbound Left Turn Queue



Project Schedule and Funding

- Phase 1 is fully funded and will be constructed in 2018-2019.
- Interchange Improvement Project is currently working on the NEPA documentation and Interchange Justification Report.
- Interchange Improvement Project has received a \$3 million FMSIB grant and the City plans to assemble the remaining funds through a combination of local City revenue, new development contributions, support by the Puyallup Tribe of Indians, and grant funds.



Project Partners

Project developed in partnership with:

- Port of Tacoma
- Washington State Department of Transportation
- Federal Highway Administration (FHWA)
- Puyallup Tribe of Indians
- City of Tacoma



Questions and Discussion



City of Fife

I-5/54th Avenue E Interchange Improvement Project